

Fabric catalogue

cabb-in

For our Cabb-ins, a high-quality and sustainable fabric is essential. That is why we frequently use Salana fabrics, which are made from 90% recycled PET material. This choice is not only a step towards a more sustainable future, but also results in an exceptionally strong upholstery fabric. In this way, we contribute to the protection of our planet, without compromising on quality and durability.



Salana



SAL001 (Aluminium)



SAL002 (Grey)



SAL003 (Thunder)



SAL004 (Anthracite)

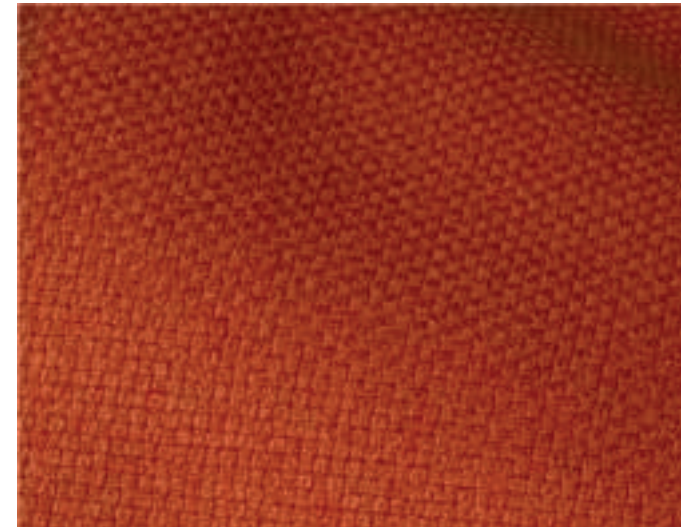
Salana



SAL005 (Black)



SAL008 (Red)

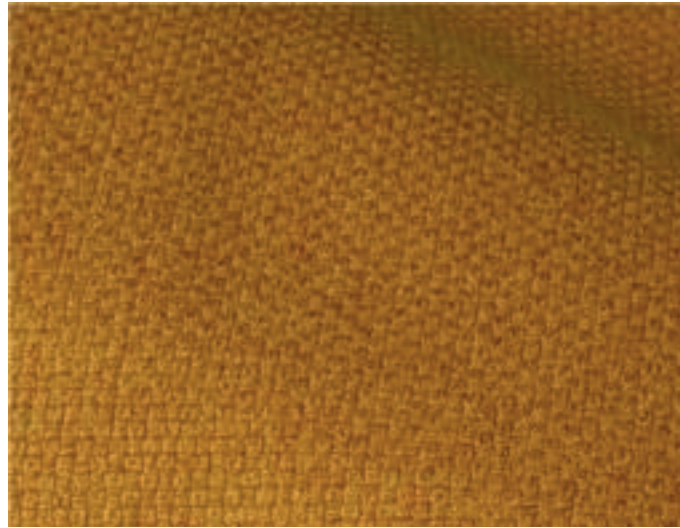


SAL009 (Orange)



SAL010 (Caramel)

Salana



SAL011 (Ocre)



SAL012 (Mint)



SAL013 (Petrol)



SAL014 (Atlantic Blue)

Salana



SAL015 (Blue)



SAL017 (Offwhite)



SAL018 (Sand)



SAL019 (Taupe)

Salana



SAL020 (Chocolate)

TECHNICAL SPECIFICATIONS

Material	100% Rpet fleece backing
Colour	17
Weight	360 gr/m2
Fire test	EN 1021-1:2014 Cigarette & Match
Lightfastness	ISO 105-B02:2014; meth. 2 5 Blue scale
Spraytest	ISO 4920:2012 4
Martindale test	ISO 12947-2:2016 70.000 cycles